



# SUBMERGED HERITAGE TRAINING



# SUBMERGED CULTURAL HERITAGE TRAINING



Prepared By

Dr. Benjamin Louis Ford

Texas A&M University

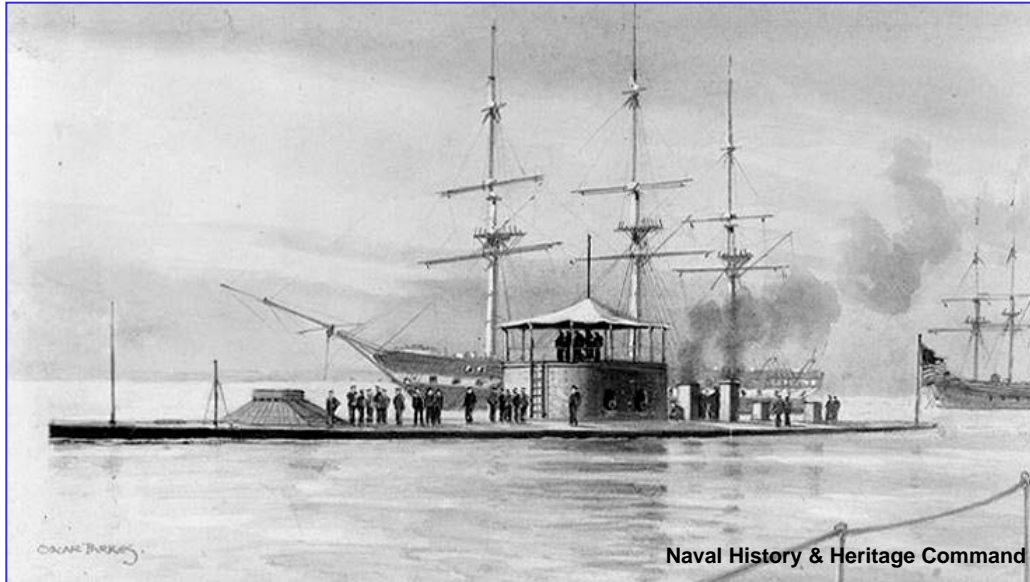
Legacy Resource Management  
Program

Project 07-324

# SUBMERGED HERITAGE TRAINING



## INTRODUCTION



### ***USS Monitor***

- Foundation of modern warships
- Wreck site was first National Marine Sanctuary
- and...

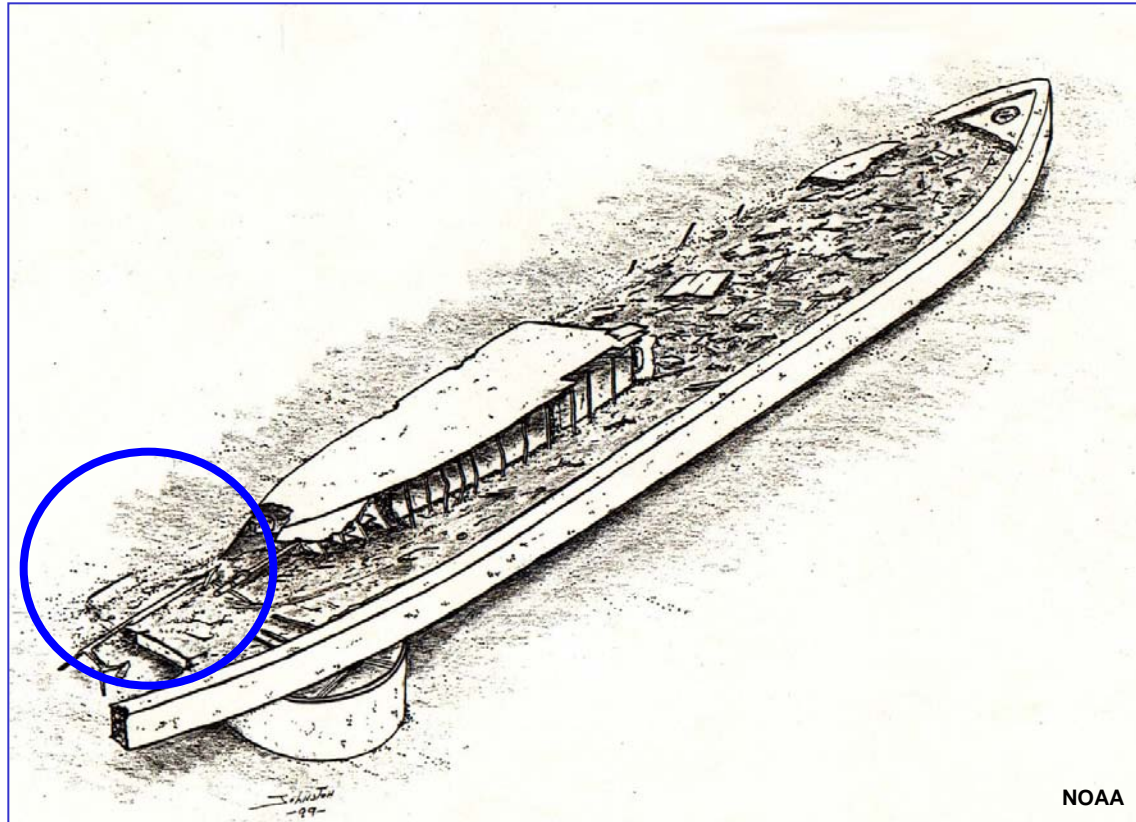


# SUBMERGED HERITAGE TRAINING



## INTRODUCTION

- Depth-charged during WWII damaging the stern armor belt.





# SUBMERGED HERITAGE TRAINING



## INTRODUCTION

### Briefing Outline:

- 1) The importance of submerged cultural heritage
- 2) The laws governing submerged archaeological sites
- 3) Why raising artifacts is a bad idea
- 4) How to identify shipwreck sites
- 5) Considering non-shipwreck sites
- 6) Resources for further information



# SUBMERGED HERITAGE TRAINING



## IMPORTANCE OF SUBMERGED HERITAGE

**Submerged cultural heritage is the underwater legacy of physical artifacts of a group or society that are inherited from past generations, maintained in the present, and bestowed for the benefit of future generations.**







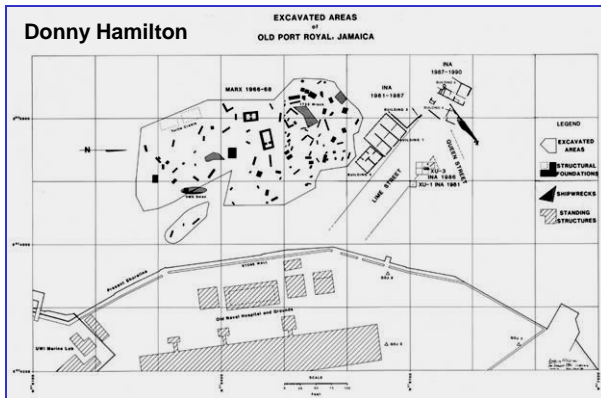
# SUBMERGED HERITAGE TRAINING



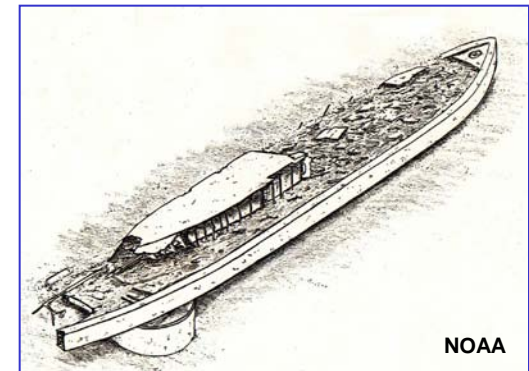
## IMPORTANCE OF SUBMERGED HERITAGE

### Types of cultural heritage importance:

#### 1) National Scale



#### 2) Continent Scale



#### 3) Global Scale



# SUBMERGED HERITAGE TRAINING



## IMPORTANCE OF SUBMERGED HERITAGE

**Underwater sites contain information about:**

- 1) Trade**
- 2) Warfare**
- 3) Populations**
- 4) Technology**
- 5) Etc.**



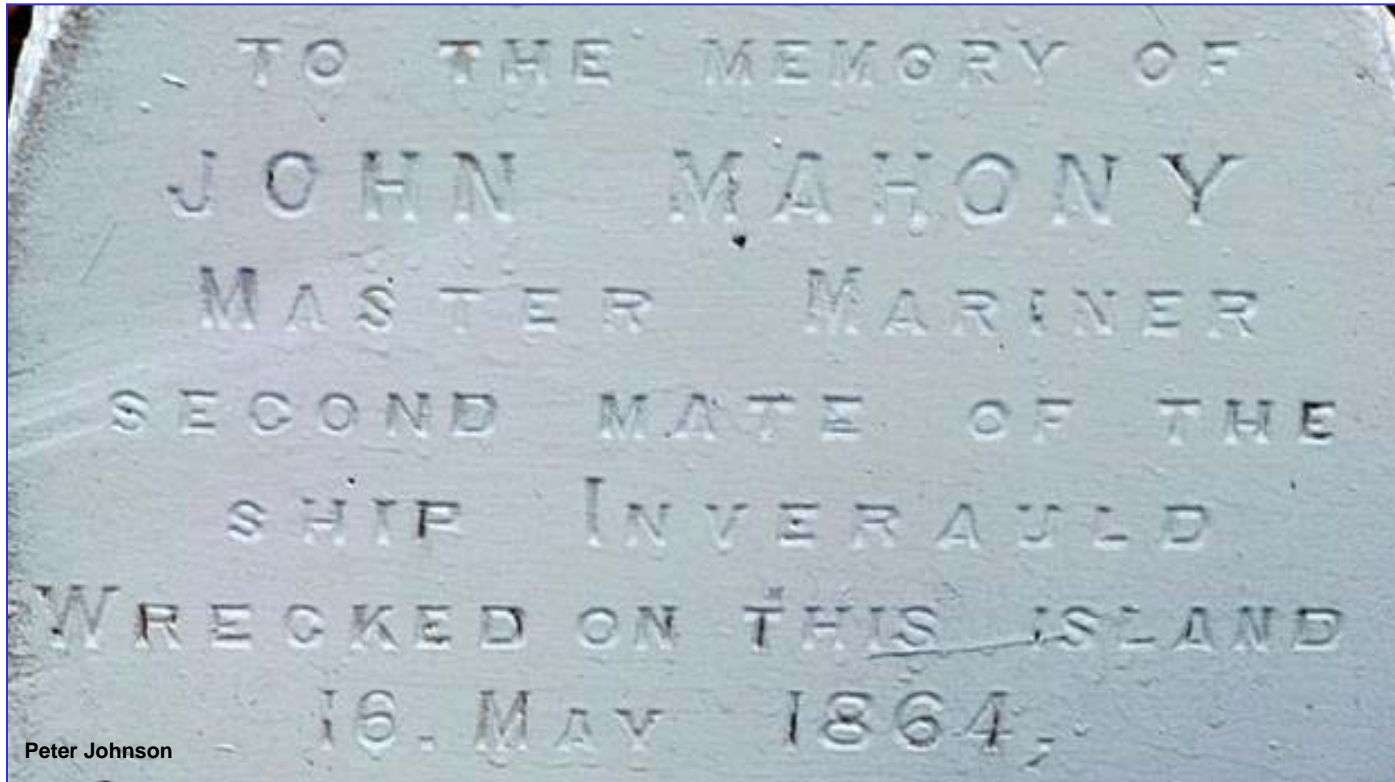
Virginia Division of Historic Landmarks



# SUBMERGED HERITAGE TRAINING



## IMPORTANCE OF SUBMERGED HERITAGE



**Shipwrecks are often graves and may contain unexploded ordnance and/or hazardous materials**





# SUBMERGED HERITAGE TRAINING



## SUBMERGED CULTURAL HERITAGE LAWS



Adam Bartlett

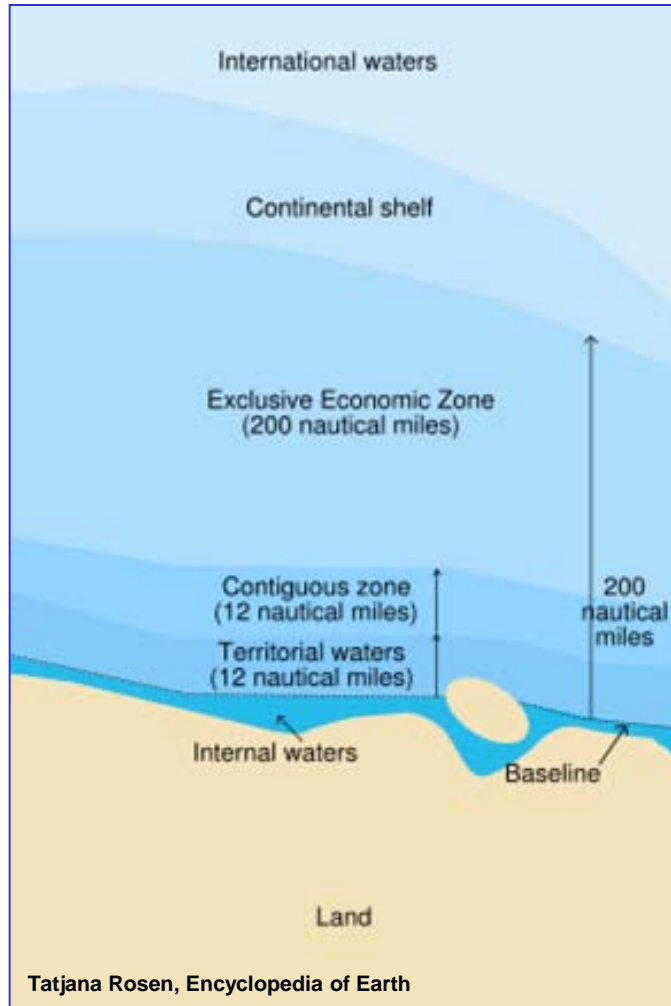
- Law of the Sea
- Admiralty Law
- Abandoned Shipwreck Act
- Sunken Military Craft Act
- Convention on the Protection of the Underwater Cultural Heritage



# SUBMERGED HERITAGE TRAINING



## SUBMERGED CULTURAL HERITAGE LAWS



**Law of the Sea defines zones of jurisdiction:**

**Territorial Waters**

**Contiguous Zone**

**Exclusive Economic Zone**



# SUBMERGED HERITAGE TRAINING



## SUBMERGED CULTURAL HERITAGE LAWS



**Admiralty Law establishes the laws of marine salvage**



# SUBMERGED HERITAGE TRAINING



## SUBMERGED CULTURAL HERITAGE LAWS

**The Abandoned Shipwreck Act of 1987 claims abandoned shipwrecks embedded in lands beneath navigable waters as the property of the U.S. government and turns them over to the states for management.**

**Each state protects its submerged cultural heritage differently.**

**Similarly, different nations have different submerged cultural heritage laws.**

The most prudent option is to avoid moving or damaging submerged sites or artifacts unless such actions are required by a mission critical project.





# SUBMERGED HERITAGE TRAINING



## SUBMERGED CULTURAL HERITAGE LAWS

**The Sunken Military Craft Act protects all sunken military craft in US waters and US sunken military craft throughout the world. It prohibits any unauthorized disturbance whatsoever.**



# SUBMERGED HERITAGE TRAINING



## SUBMERGED CULTURAL HERITAGE LAWS



**The United Nations Convention on the Protection of the Underwater Cultural Heritage is designed to protect submerged heritage sites in international waters.**



# SUBMERGED HERITAGE TRAINING



## DAMAGE TO SUBMERGED HERITAGE

**Even well-planned and executed attempts to raise submerged artifacts or shipwrecks can result in the destruction of the object.**



Mississippi Agriculture and Industry Board





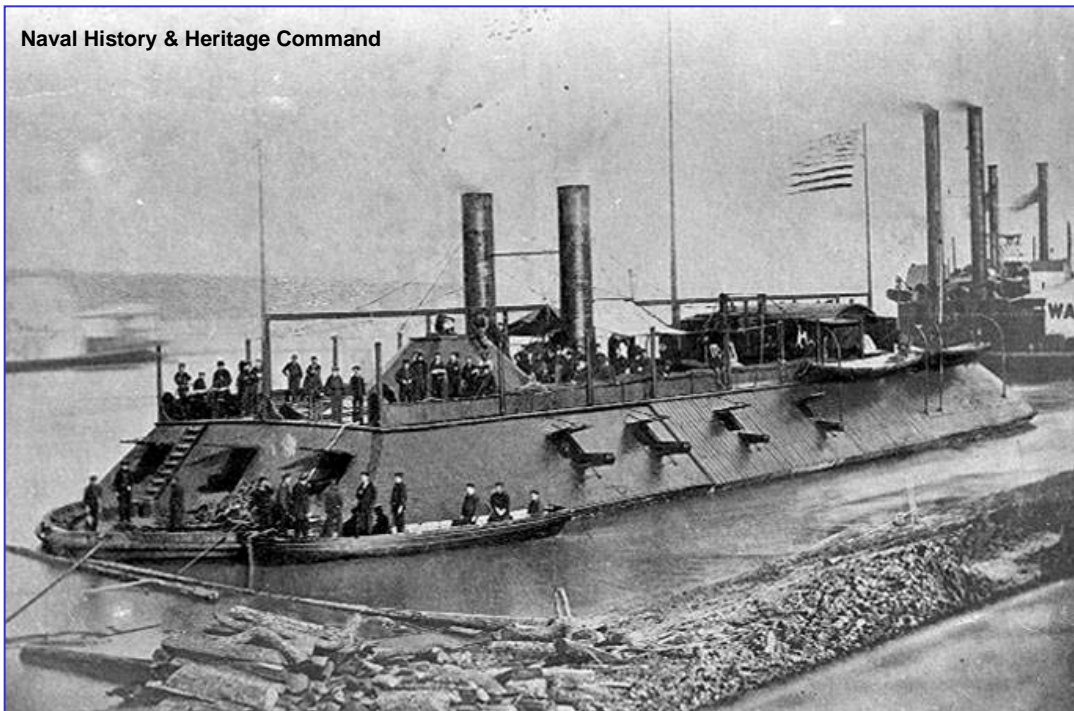
# SUBMERGED HERITAGE TRAINING



## DAMAGE TO SUBMERGED HERITAGE

**USS *Cairo* - raised from  
Yazoo River**

**1862**



**1964**



Mississippi Agriculture and Industry Board



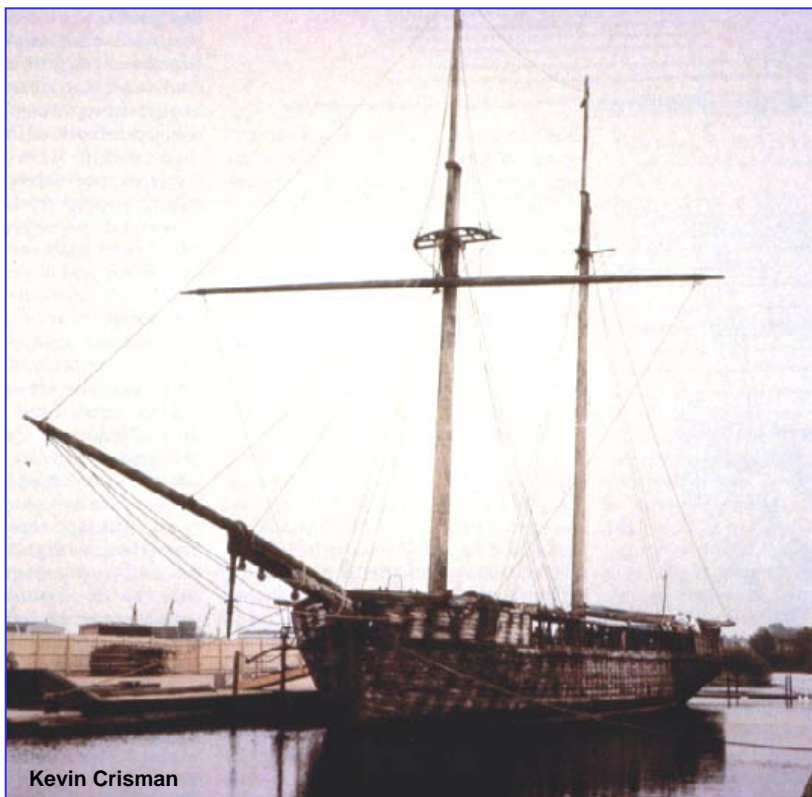


# SUBMERGED HERITAGE TRAINING



## DAMAGE TO SUBMERGED HERITAGE

1969



*Alvin Clark* - raised  
from Lake Michigan

1990





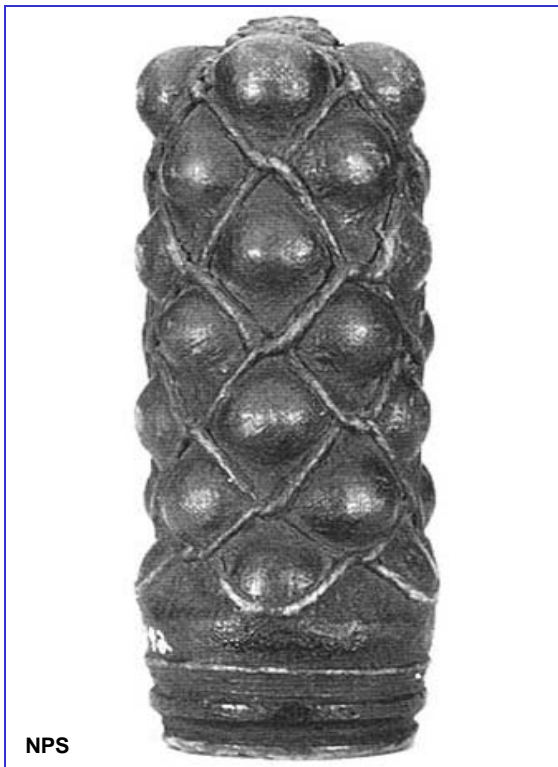
# SUBMERGED HERITAGE TRAINING



## DAMAGE TO SUBMERGED HERITAGE

### Grape-Shot raised from Lake Champlain

**As Made/Found**



**Without Conservation**







# SUBMERGED HERITAGE TRAINING



## IDENTIFYING SHIPWRECKS



**Anchor Drag Scars**

**Submerged cultural heritage can be unintentionally but severely damaged by anchor drags, prop wash, explosions, and other activities that disturb the bottom.**

**It is important to be aware of potential submerged sites to avoid this damage.**



# SUBMERGED HERITAGE TRAINING



## IDENTIFYING SHIPWRECKS

Parks Canada/Peter Waddell



## Clearly Identifiable Shipwrecks

Michael Krivor/NOAA-OER



UNESCO







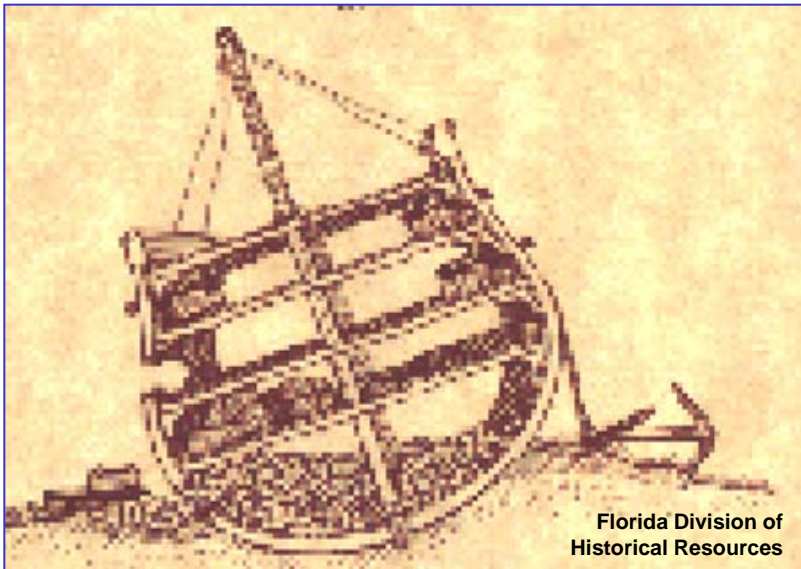
# SUBMERGED HERITAGE TRAINING



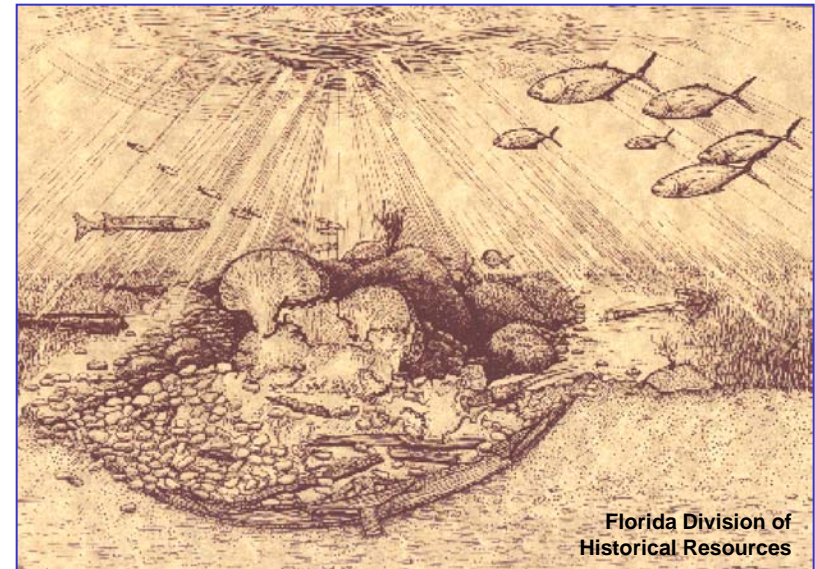
## IDENTIFYING SHIPWRECKS

### The Formation of a Wreck Site

Immediately after wrecking



300 years later





# SUBMERGED HERITAGE TRAINING



## IDENTIFYING SHIPWRECKS

Institute for the Visualization of History, Inc./Susan Katzev and the Kyrenia shipwreck team



**Some shipwrecks appear as piles of stone or pottery on the bottom.**



# SUBMERGED HERITAGE TRAINING



## IDENTIFYING SHIPWRECKS



**Other shipwrecks appear as a scatter of artifacts.**



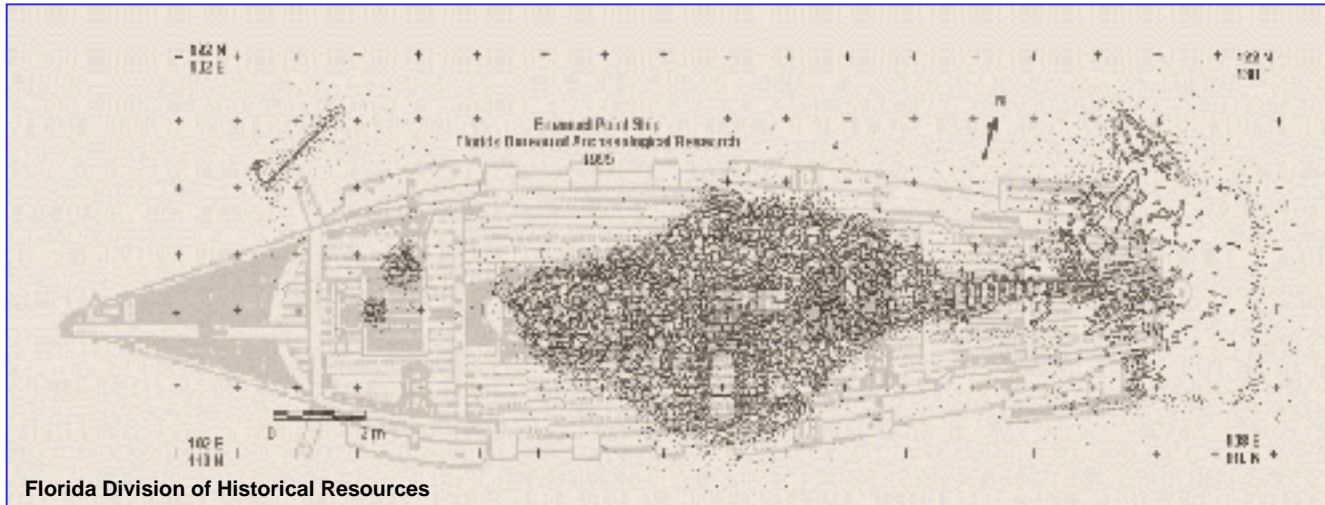


# SUBMERGED HERITAGE TRAINING

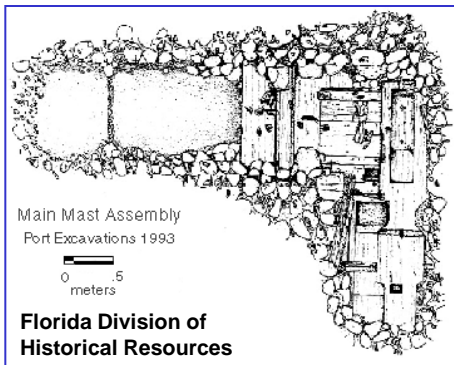


## IDENTIFYING SHIPWRECKS

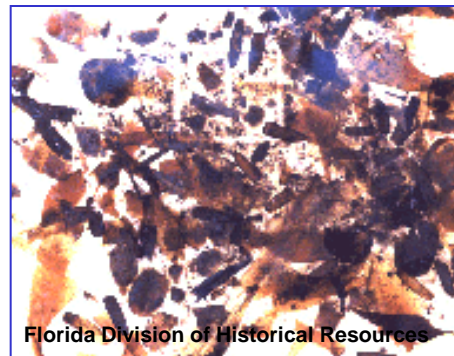
### Emanuel Point Shipwreck



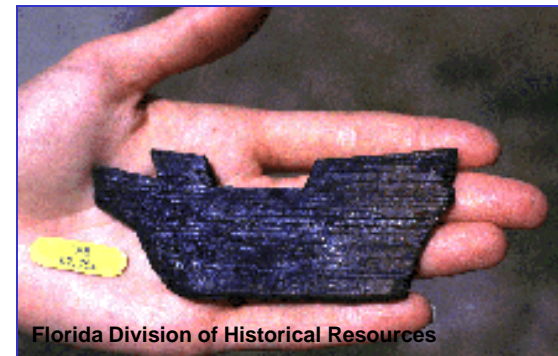
Florida Division of Historical Resources



Florida Division of Historical Resources



Florida Division of Historical Resources



Florida Division of Historical Resources





# SUBMERGED HERITAGE TRAINING



## IDENTIFYING SHIPWRECKS

**It is impossible to tell if a shipwreck may hold the key to understanding questions about past cultures without studying the wreck.**

**Consequently, it is advisable to be aware of submerged cultural heritage sites that are in and around an area of operation and to consider the potential impacts that an operation may have on these sites.**



# SUBMERGED HERITAGE TRAINING



## IDENTIFYING SHIPWRECKS



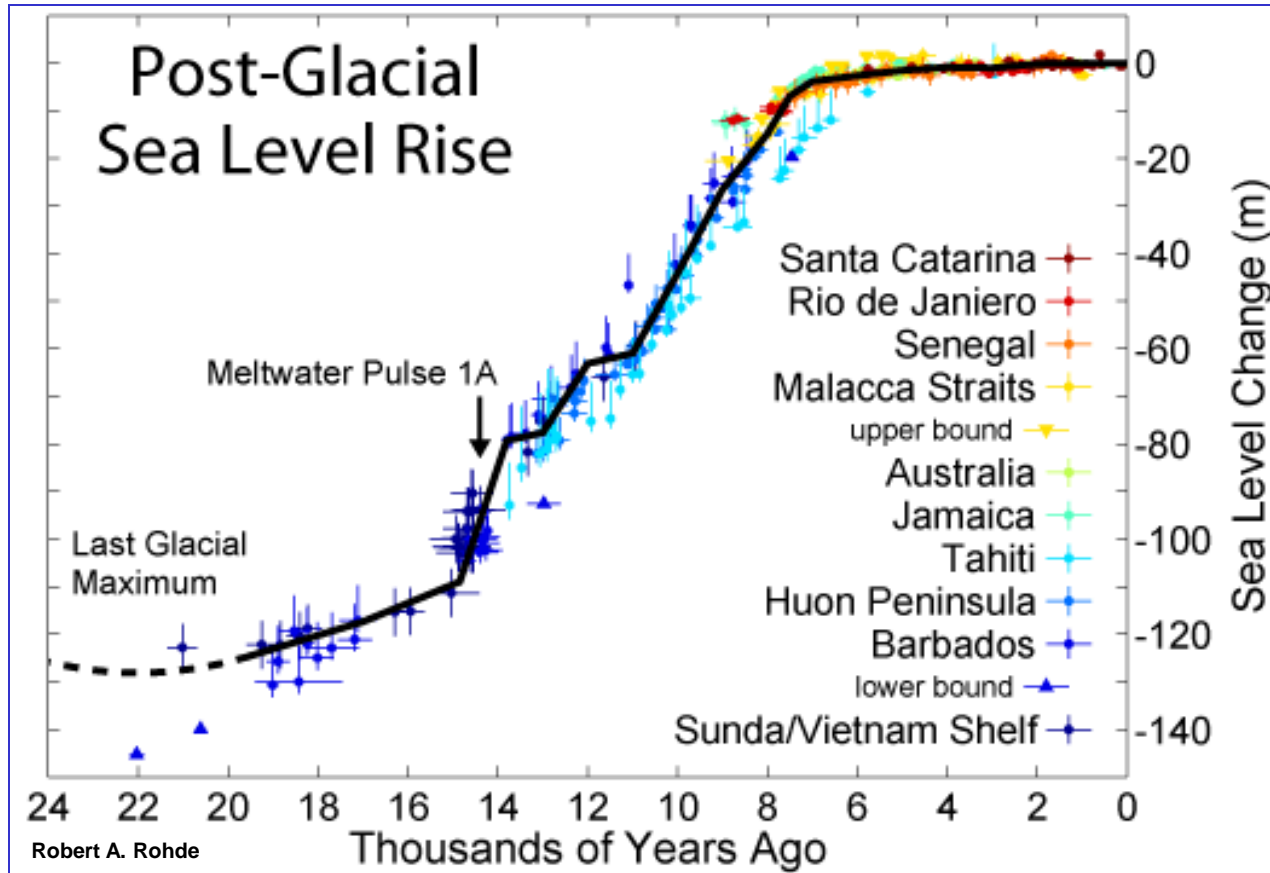
## Ship Trap, Turks and Caicos Islands



# SUBMERGED HERITAGE TRAINING



## NON-SHIPWRECK SUBMERGED HERITAGE



**The oceans have risen significantly during the past 20,000 years and have submerged many sites.**



# SUBMERGED HERITAGE TRAINING



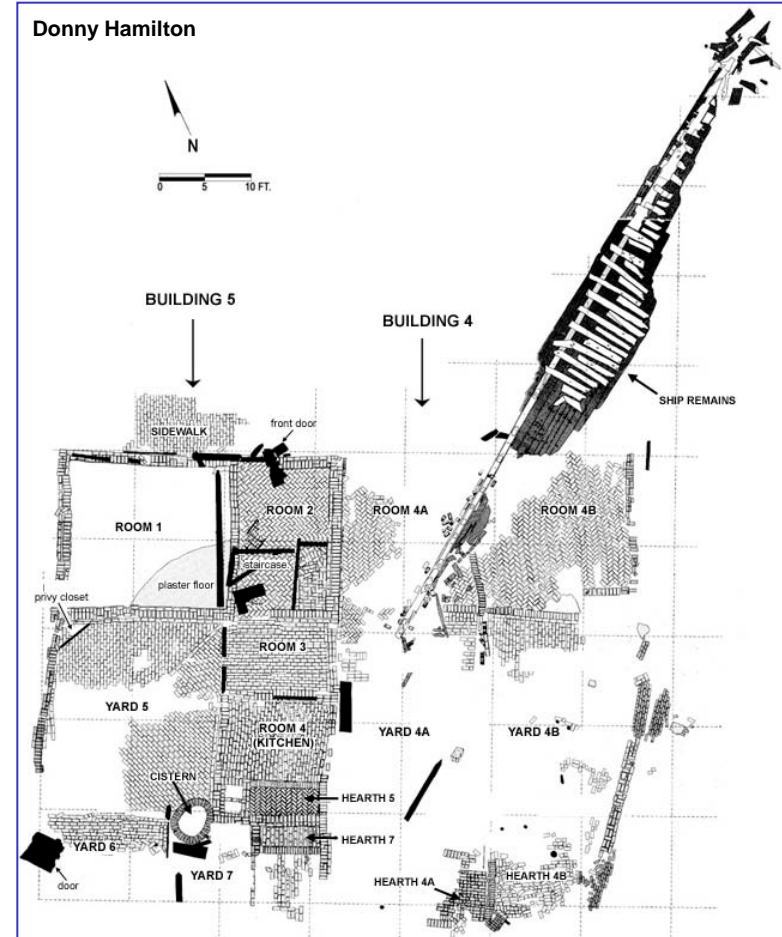
## NON-SHIPWRECK SUBMERGED HERITAGE

Donny Hamilton



**Port Royal, Jamaica  
a sunken city**

Donny Hamilton







# SUBMERGED HERITAGE TRAINING



## NON-SHIPWRECK SUBMERGED HERITAGE

**If you can see old structures or know that there are archaeological sites on the shore it is likely that there will be submerged cultural heritage in the area.**

Creative Commons



Joe Freeman





# SUBMERGED HERITAGE TRAINING



## ADDITIONAL RESOURCES

**Naval History & Heritage Command**

**[www.history.navy.mil](http://www.history.navy.mil)**

**National Park Service, Submerged Resources Center**

**[home.nps.gov/applications/submerged](http://home.nps.gov/applications/submerged)**

**NOAA National Marine Sanctuaries**

**[sanctuaries.noaa.gov](http://sanctuaries.noaa.gov)**

**UN Educational, Scientific, and Cultural Organization**

**[www.unesco.org](http://www.unesco.org)**

**Institute of Nautical Archaeology**

**[inadiscover.com](http://inadiscover.com)**

**Center for Maritime Archaeology and Conservation**

**[nautarch.tamu.edu.cmac](http://nautarch.tamu.edu.cmac)**



# SUBMERGED HERITAGE TRAINING



## SUMMARY

- 1) Submerged cultural heritage is an important part of our local and global histories.**
- 2) Submerged cultural heritage is often protected by local, state, federal, and international laws.**
- 3) Raising objects pieces of submerged cultural heritage, be they artifacts or shipwrecks, often results in the destruction of the object.**
- 4) Explosions, anchor drags, and any disturbing of the bottom may damage cultural heritage sites, so it is important to be aware when there is a likelihood of sites.**
- 5) Shipwrecks are a primary type of submerged cultural heritage, but submerged land sites and isolated artifacts may also be encountered.**