

# KIRTLAND'S WARBLER MANAGEMENT AREA

MANAGED IN COOPERATION WITH

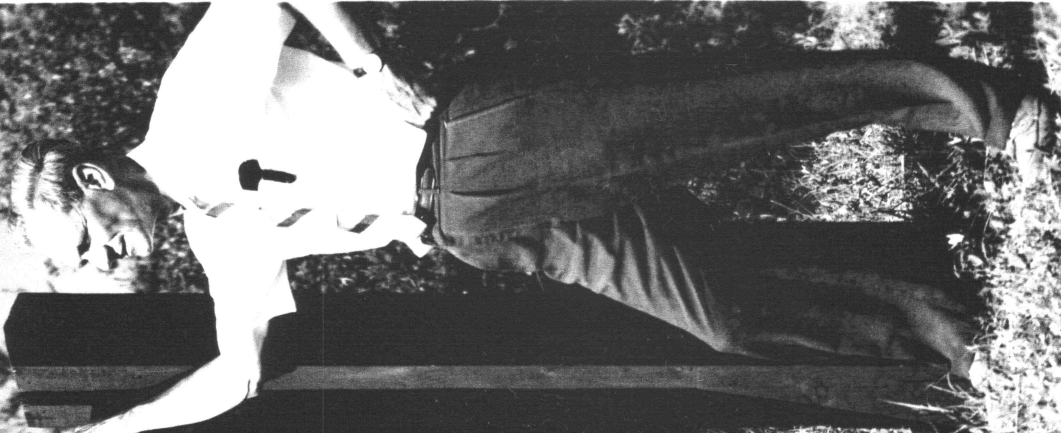
- PONTIAC AUDUBON CLUB
- MICHIGAN AUDUBON SOCIETY
- DETROIT AUDUBON SOCIETY



## MICHIGAN NATURAL AREAS COUNCIL

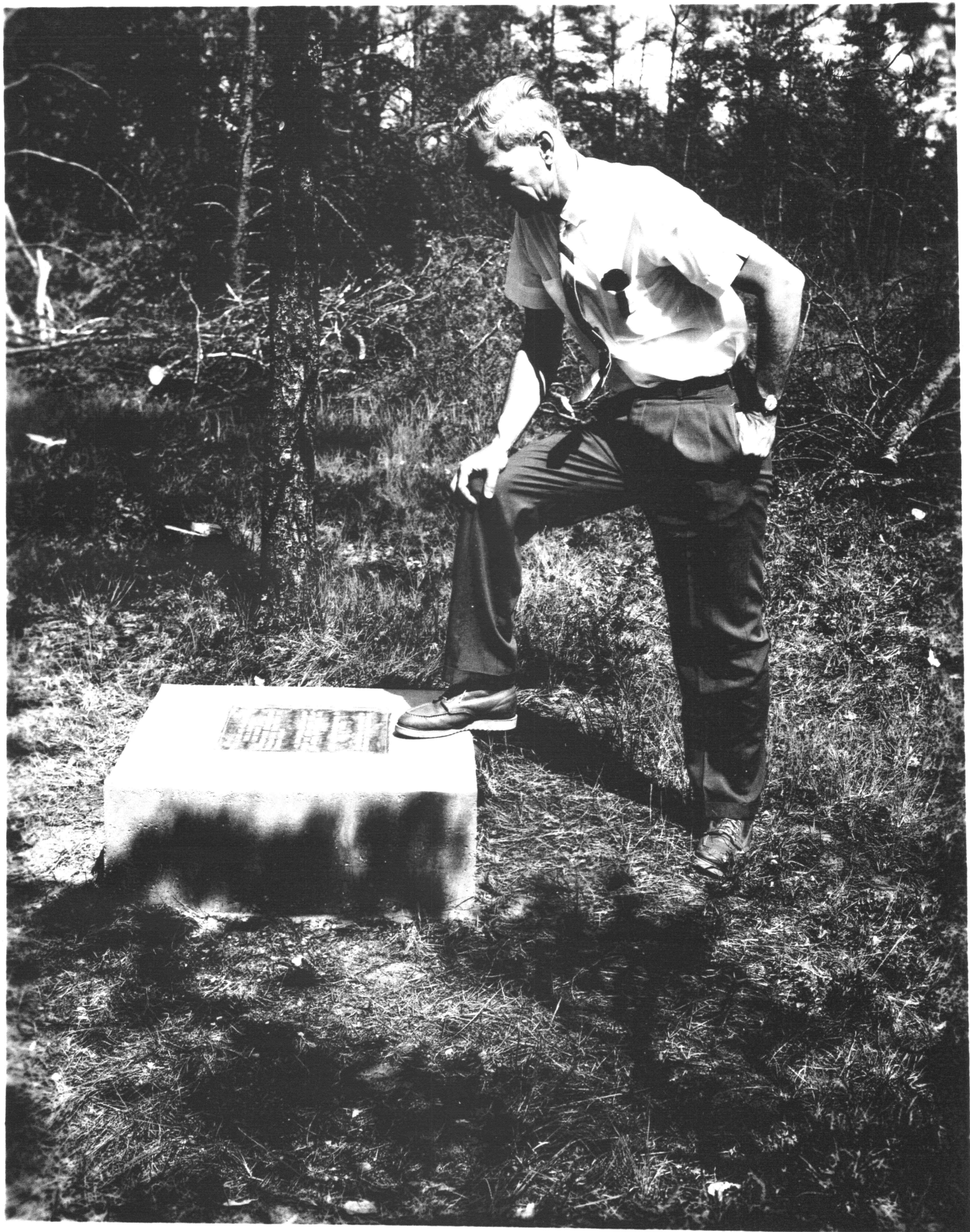
THIS AREA OF 4010 ACRES IS MANAGED TO PRESERVE THE NESTING HABITAT OF THE KIRTLAND'S WARBLER, A RARE SONG BIRD, WHICH NESTS ONLY IN THIS GENERAL AREA OF MICHIGAN CONTROLLED BURNING, TIMBER HARVESTING, AND SPECIAL PLANTINGS ARE MADE TO PRODUCE THE YOUNG PINE REQUIRED BY THIS BIRD FOR NESTING. MULTIPLE USE FOREST MANAGEMENT PROVIDES FOR THE NEEDS OF WILDLIFE AS WELL AS FOR WOOD, RECREATION, AND WATER

## HURON NATIONAL FOREST









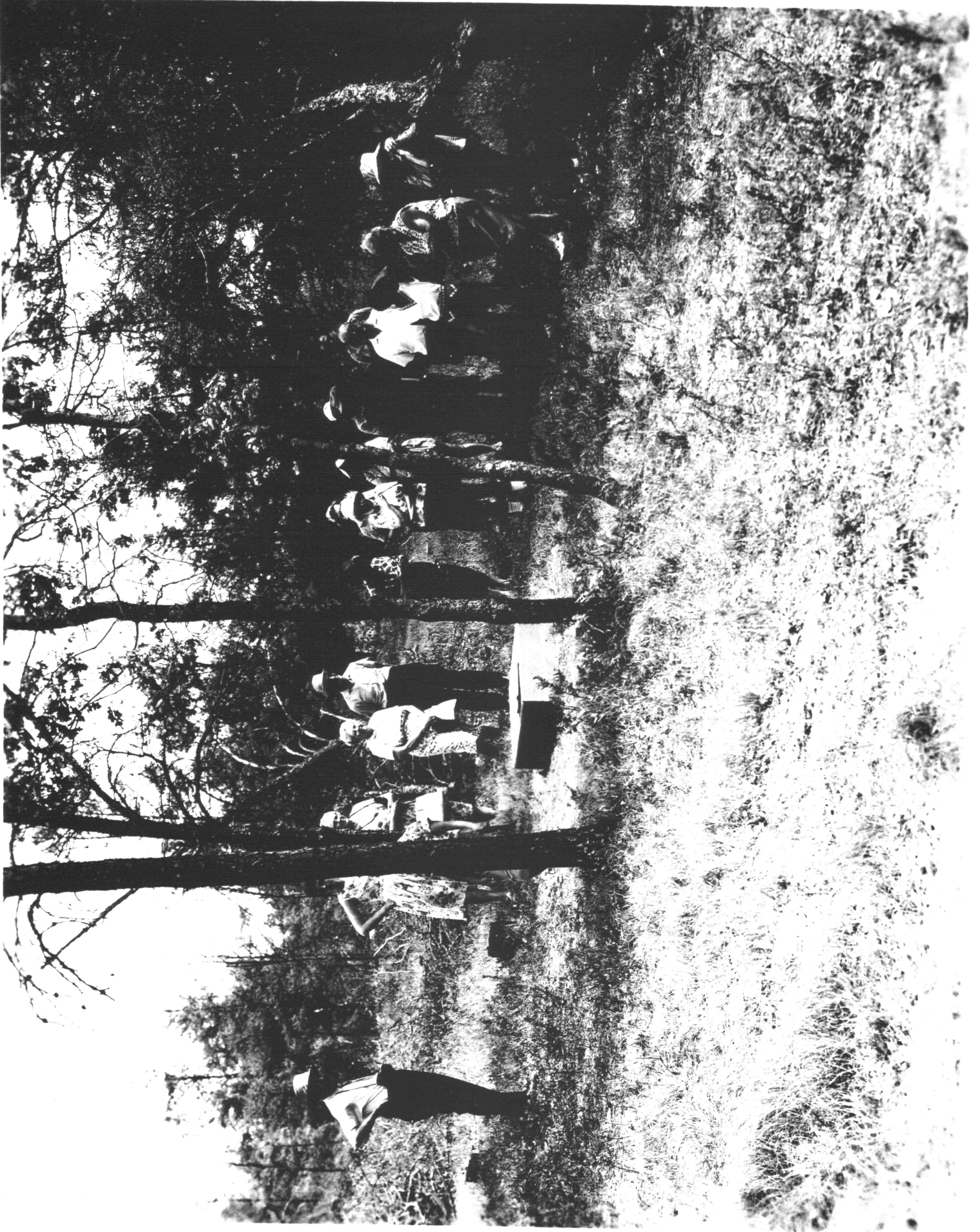


















THE HISTORY OF THE  
CITY OF NEW YORK  
FROM 1609 TO 1812  
BY JOHN B. HOGAN  
PUBLISHED BY G. P. PUTNAM'S SONS  
NEW YORK













