

DoD Ergonomics Working Group NEWS



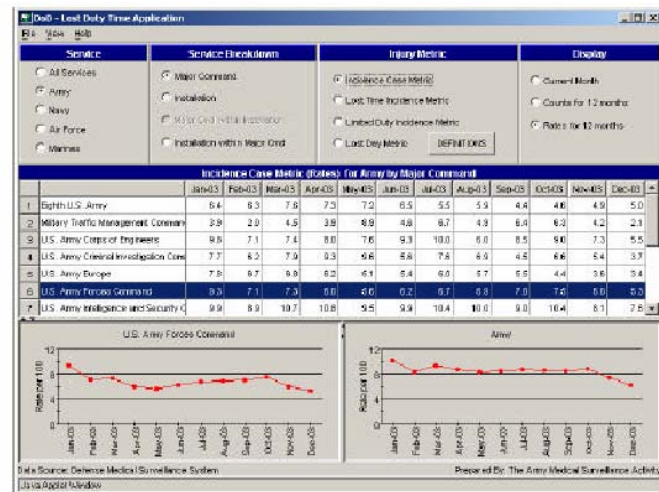
Issue 30, April 2004

www.ergoworkinggroup.org

DoD Military Injury Lost Duty Time Application: System Overview

DESCRIPTION

The Lost Duty Time Application supports the readiness implications of the Secretary of Defense's initiative to capture the Departments' lost time for injuries. This Web-based application displays active duty military injury metrics and lost duty rates generated from data contained within the Defense Medical Surveillance System (DMSS). Accessible "real time" data displayed by the Lost Duty Time Application provides commanders and policymakers with a critical tool in the development, implementation and management of the DoD's safety initiatives.



KEY FEATURES

- Summarizes injury experience of all members of the active components of the Army, Navy, Air Force, and Marines
- Displays metrics at the DoD, Service, Major Command, and Installation levels
- Interactively generated tabular and graphical summaries of injury-related metrics
- Four distinct metrics: Incidence Case Metric, Lost Time Incidence Metric, Limited Duty Incidence Metric, and Lost Day Metric
- Compares rates (graphically) between selected level and next highest level
- Includes medical encounters from both military and civilian facilities
- Allows users to view metrics for populations of their interest
- Displays counts and rates for current month and the past 12 months
- Allows users to export data into other applications (e.g., MS Excel)
- Web-based, user-friendly graphical interface

ACCESSING THE APPLICATION

The DoD Military Injury Lost Duty Time Application is accessible from the Army Medical Surveillance Activity (AMSA) Web site at: <http://amsa.army.mil>. This site can only be reached from computers with a .mil address and requires installation of a JAVA run-time application. You can download the JAVA application directly from the AMSA Web site; however, because of local information security policies preventing users from installing applications onto their PC, you may have to communicate with your local information management office to permit the JAVA installation.

Continued on page 2

DATA SOURCE - The Defense Medical Surveillance System

The DMSS is an executive information decision support system. The DMSS database contains historical and continuously updated data related to medical events (e.g., hospitalizations, ambulatory visits, reportable diseases, HIV-1 serologic tests, immunizations, and health assessments), military experiences, and demographic characteristics of all members of the US Armed Forces. Data in the DMSS are provided from many sources throughout the DoD.

THE INJURY METRICS

- **Incidence Case Metric.** The rate of new injury cases per 100 military personnel during a given month. This metric indicates the rate at which injuries (regardless of severity or consequence) occurred in a population during a specified month. This is a measure of the frequency of injuries of all types.
- **Lost Time Incidence Metric.** The rate of new injury cases per 100 military personnel that resulted in any lost duty time during a given month. This metric indicates the rate at which injuries (severe enough to result in hospitalization or exclusion from all duties) occurred in a population during a specified month. This is a measure of the frequency of more severe injuries that may significantly impact operational capabilities and readiness.
- **Limited Duty Incidence Metric.** The rate of new injury cases per 100 military personnel that resulted in a medical recommendation for limited duty during a given month. This metric indicates the rate at which injuries (severe enough to result in partial limitation of duties) occurred in a population during a specified month. This is a measure of the frequency of less severe injuries that may impact operational capabilities and readiness.
- **Lost Day Metric.** The rate of lost days due to injuries per 100 military personnel during a given month. This metric indicates the total number of days lost due to injuries (severe enough to result in hospitalization or exclusion from all duties) occurred in a population during a specified month. This is a measure of the impact of injuries on operational capabilities and readiness.

CONTACT INFORMATION

For technical assistance contact the Lost Duty Time Application administrator at the Army Medical Surveillance Activity at lostdutyadm@amsa.army.mil.